



**Hawaii High School Athletic Association
Judo State Championships
Saturday, May 9, 2015
Stan Sheriff Center, University of Hawaii at Manoa**

**HAWAII HIGH SCHOOL ATHLETIC ASSOCIATION
JUDO STATE CHAMPIONSHIPS
SATURDAY, MAY 9, 2015
STAN SHERIFF CENTER, UNIVERSITY OF HAWAII AT MANOA**

HAWAII HIGH SCHOOL ATHLETIC ASSOCIATION

Executive DirectorChris Chun
Office Manager..... Russ Aoki
Director of Information Hoku Haliniak
Asst. Director of Information Natalie Iwamoto, Wes Nakama
Judo Coordinator Blake Moritsugu

TOURNAMENT COMMITTEE

Tournament DirectorBlake Moritsugu, Joel Kawachi
Host SchoolAiea and Moanalua High School
Executive DirectorsRaymond Fujino, Don Botelho, Lyle Crozier, Joe Balangitao, Diane Nitta
Rules, Scoring & Officials..... Ed Hanashiro, Leigh Nakamoto, Roy Uemura & Keith Hayashi
Protest CommitteeEd Hanashiro, Roy Uemura & Keith Hayashi
Awards and Ceremony Moanalua High School
Seeding/Pairings Blake Moritsugu & league representatives
Weigh-In..... OIA & ILH
Head Table..... OIA
Announcer OIA
Site Managers Joel Kawachi & Blake Moritsugu
Medical Personnel Athletic Trainers, OIA, ILH, MIL, KIF, BIIF

SPECIAL THANKS

University of Hawaii AthleticsTeri Wilhelm-Chang, Asst. Athletic Director for Facilities & Events
.....Sis Finau, Administrative Officer for Facilities & Events
.....Rich Sheriff, Stan Sheriff Center Manager
.....Russ Gima, Asst. Stan Sheriff Center Manager
.....Kekoa Seward, Asst. Stan Sheriff Center Manager
.....Walter Watanabe, UH Athletics Ticket Manager
.....Kelsey Yoshimura, Asst. UH Athletics Ticket Manager
Moanalua High School Robin Martin, Principal

**HAWAII HIGH SCHOOL ATHLETIC ASSOCIATION
STATE JUDO CHAMPIONSHIPS
SATURDAY, MAY 9, 2015
STAN SHERIFF CENTER, UNIVERSITY OF HAWAII AT MANOA**

TOURNAMENT INFORMATION

I. HHSAA JUDO REGULATIONS

HHSAA Judo Regulations may be found in the HHSAA Handbook.

II. LEAGUE SLOTS

Boys:	Girls:
OIA – 7	OIA – 7
ILH – 4	ILH – 5
BIIF – 3	BIIF – 2
MIL – 2	MIL – 2
As of April 15, 2015	

III. ENTRIES

The deadline for team entries (for gym entry purposes and coaches certification verification) is noon on **Wednesday, April 29, 2015**.

Contestants, coaches, and team managers must be listed on their school's Official Tournament Roster for complimentary admission to the tournament. With respect to contestants, only tournament contestants will be allowed into the tournament venue for free. In other words, anyone who competed in the regular season but did not qualify for the state tournament will not be allowed into the tournament for free. No additions to the entry list (Official Tournament Roster) will be accepted on the day of the tournament.

IV. SEEDINGS/PAIRINGS COMMITTEE

The Seedings/Pairings Committee Meeting will be held at the Aiea High School Multipurpose Center (next to library) at 9:00 a.m. on Sunday, May 3, 2015. Representatives are requested to bring ten copies of their respective league judo tournament results to the meeting. Each contestant's first and last name and school are requested in typed format.

V. SCHEDULE

Saturday, May 9, 2015

Weigh-In	9:00 – 10:00 a.m.
Coaches Meeting	10:00 a.m.
Start of Matches	10:30 a.m.

Note: A scale will be made available to check weight at 8:00 – 8:50 a.m.

VI. CODE OF CONDUCT

The coach shall have direct responsibility for the conduct of team members prior to, during, and after tournament competition (in the hotel, in public, at the tournament, transporting to and from the

tournament site). Schools and individuals will be held liable for any damages incurred at the tournament site.

VII. STATE TOURNAMENT DISQUALIFICATION RULE

Any student-athlete or coach disqualified before, during, or after a state tournament game/match/event for unsportsmanlike conduct, flagrant verbal misconduct, or flagrant physical misconduct shall be disqualified from his/her next scheduled state tournament game/match/event for that sport. The student-athlete or coach has the right to appeal any such disqualification to an appeals committee for the particular sport. Should a student-athlete or coach be disqualified from the final state tournament game/match/event for that sport, said disqualification shall NOT carry over to the following school year's state tournament for that sport. Instead, the student-athlete's or coach's league shall determine any appropriate penalty or sanction.



Sodexo will be offering a breakfast buffet for **participants and coaches only**, after weigh-ins for HHSAA Judo State Tournament.

MENU*

Rice

Potato

Scrambled Eggs

2 Breakfast Meats

Juice and Water

*subject to change without notice

Gatorade available for purchase

Cost: \$9.00 per entry - cash or check
(no food to leave room, no re-entry, cash or check)

Location: Diamond Head Room
(hallway left of Security Entrance)

Time: 8:30am – 10:30am

SEATING AND TIME IS LIMITED, SO PLEASE:

- **Only participants and coaches allowed**
- **No Camping**

JUDO

I. SPECIFIC OBJECTIVES

- A. To determine the state individual and team championships.
- B. To promote interest in judo on the part of students, school, and community.
- C. To promote individual, team, school, and spectator citizenship.

II. OFFICIALS

A. Selection and Assignments

- 1. Officials may be selected from all participating leagues. Names of qualified officials may be sent to the HHSAA Executive Director by a league's Executive Secretary or his/her representative.
- 2. Selection and assignment of officials shall be made by the HHSAA Executive Director and HHSAA Sport Coordinator.
- 3. There shall be one judge and two referees for each match.

B. Financial Allowance

- 1. Referees and judges shall be paid based upon HHSAA rates.
- 2. HHSAA rate: \$3.00 per match

III. ELIGIBILITY (SEE HHSAA HANDBOOK)

IV. RULES GOVERNING THE TOURNAMENT

- A. The Contest Rules of the International Judo Federation ("IJF"), except as modified herein, shall govern all matches.
- B. Coaches are reminded to instruct their athletes of the tournament venue's regulations and to abide by these regulations.
- C. The NFHS Wrestling Rules 4-2-3 through 4-2-5 shall apply to situations involving communicable skin diseases or any other skin condition.

ART. 3... If a participant is suspected by the referee or coach of having a communicable skin disease or any other condition that makes participation appear inadvisable, the coach shall provide current written documentation as defined by the NFHS or the state associations, from an appropriate health-care professional stating that the suspected disease or condition is not communicable and that the athlete's participation would not be harmful to any opponent. This document shall be furnished at the weigh-in for the dual meet or tournament. The only exception would be if a designated, on-site meet appropriate health-care professional is present and is able to examine the wrestler immediately after the weigh-in. Covering a communicable condition shall not be considered acceptable and does not make the wrestler eligible to participate. (See NFHS Communicable Disease Procedures in Appendix D on page 87)

ART. 4... If a designated, on-site meet appropriate health-care professional is present, he/she may overrule the diagnosis of the appropriate health-care professional signing the medical release form for a wrestler to participate or not participate with a particular skin condition.

ART. 5... A contestant may have documentation from an appropriate health-care professional only indicating a specific condition such as a birthmark or other non-communicable skin conditions such as psoriasis and eczema, and that documentation is valid for the duration of the season. It is valid with the understanding that a chronic condition could become secondarily infected and may require re-evaluation.

Also, the HHSAA's "Physician Release for Athlete to Participate With Skin Lesion(s)" shall be utilized as appropriate. See attached.

- D. The teams are required to bring their own blue belts to the state tournament.

V. TOURNAMENT FORMAT

- A. Type of tournament – Modified double-elimination, held on one day. All contestants losing in the championship rounds will move into the consolation rounds.
- B. There shall be a maximum of 16 entries in each weight classification. Each school is allowed up to two (2) entries in each weight class. The scorer from the school (when there is more than one participant from a school in a given weight class) shall be the higher finisher from that school in the weight class.
- C. The 10 Boys weight classifications are:

- | | |
|-------------|--------------|
| 1. 108 lbs. | 6. 161 lbs. |
| 2. 114 lbs. | 7. 178 lbs. |
| 3. 121 lbs. | 8. 198 lbs. |
| 4. 132 lbs. | 9. 220 lbs. |
| 5. 145 lbs. | 10. 285 lbs. |

The 10 Girls weight classifications are:

- | | |
|-------------|--------------|
| 1. 98 lbs. | 6. 129 lbs. |
| 2. 103 lbs. | 7. 139 lbs. |
| 3. 109 lbs. | 8. 154 lbs. |
| 4. 115 lbs. | 9. 172 lbs. |
| 5. 122 lbs. | 10. 220 lbs. |

D. Scoring

1. Individual Match Scoring

10 points – win by *ippon* or equivalent
7 points – win by *wazari* or equivalent
5 points – win by *yuko* or equivalent

Note: All cancelled out points shall not count in the individual match score. For example, if Contestant A scores a wazari, and Contestant B also scores a wazari, but Contestant A also scores a yuko before the end of the match, Contestant A's team gets five points, as the wazaris cancel each other out.

2. Team Scoring

For team scoring purposes, the following points shall be awarded per each weight class:

- a) 1st Place – 16 points
- b) 2nd Place – 12 points
- c) 3rd Place – 9 points
- d) 4th Place – 7 points
- e) 5th Place – 5 points
- f) 6th Place – 3 points

Note: A school that enters two participants in a weight class does not have to designate one of the two participants for scoring purposes prior to the start of the tournament. The participant who is the higher finisher shall automatically be counted for team scoring purposes.

E. Weigh-In

1. Coaches from at least two different schools shall conduct the official weigh-in.
2. Two certified scales shall be available at the tournament site during weigh-in.
3. Male contestants shall strip to underwear, shorts, or less, and shall weigh-in barefooted. Female contestants shall wear a bathing suit or t-shirt and shorts or less and be barefooted.
4. During weigh-in, the actual weight of the contestant shall be written on the weigh-in sheet. The contestant's first and last name shall be clearly printed.
5. All participants must weigh-in between one and one-half (1 ½) hours to one-half (1/2) hour prior to the start of the tournament.
6. All contestants shall be present in and remain in the designated weigh-in area at the time established by the meet administration. Contestants shall not leave the designated weigh-in area unless permission is granted by the meet administration. The weigh-in shall proceed through the weight classes beginning with the lowest weight class and end immediately upon completion of the highest weight class. A contestant shall weigh in only for one weight class during the weigh-in period. If only one scale is available, a contestant may step on and off that scale two times to allow for mechanical inconsistencies in the scale. If multiple scales are available, a contestant may step on and off the first scale two times to allow for mechanical inconsistencies in that scale. If the contestant fails to make weight on the first scale, the contestant shall immediately step on each available scale one time in an attempt to make weight. During time off the scale(s), activities that promote dehydration are prohibited.

F. Tournament Site

1. Unless otherwise agreed upon between the OIA and ILH, the hosting of the HHSAA State Judo Tournament shall be rotated as follows: OIA-ILH
2. The HHSAA Executive Director shall select the tournament site.

G. Length of Matches

1. All winners bracket matches shall be four minutes, including the 1st, 3rd, and 5th place matches. (Rev. 6/2012)
2. Unless otherwise noted, all consolation bracket matches shall be three minutes.
3. All 1st, 3rd, and 5th place matches shall be five minutes.
4. Sudden-death overtime will be implemented in the case of a tie at the end of the regulation. The first contestant who scores the first point in overtime shall be declared the winner.

H. Penalties

1. Technical *hansoku make* involves a violation of technique and includes, but is not limited to, failure to comply with proper uniform (see Section VI. Uniform)
 - a. Contestant shall be allowed to continue to participate in the tournament.
 - b. Bridging while in osaekomi (press for score): When the contestant is on top of his/her opponent for newaza or osaekomi and his/her opponent who is on her/her back over-bridges (neck past vertical-acute angle with body), which places the opponent in a dangerous position, the opponent will be first warned. A second infraction will be a technical *hansoku make*.
2. Unsportsmanlike Conduct

- a. Misconduct involves physical or non-physical acts and can occur before, during or after a match. It includes, but is not limited to such acts as failure to comply with the direction of the officials, swearing, taunting, intimidation, baiting an opponent, throwing items, spitting and clearing of nasal passages in other than the proper receptacle, indicating displeasure with a call, and failure to comply with end of match procedures. Continuing acts of unsportsmanlike conduct shall be construed as flagrant misconduct.
 - 1) Three points shall be deducted from the team score for each unsportsmanlike conduct violation.
 - 2) Contestant shall be allowed to continue to participate in the tournament. However, upon receipt of a second unsportsmanlike conduct penalty, the contestant shall not be allowed to participate for the rest of the day.
 - b. Flagrant misconduct involves physical or non-physical acts and they can occur before, during or after a match and is any act considered by an official to be serious enough to disqualify a contestant from the match and any additional competition. It is not limited to striking, butting, elbowing, kicking, slapping, shoving, biting, use of tobacco products, and extreme and loud displays of displeasure or conduct unbecoming of the sport.
 - 1) If a contestant who places in the top six in his/her weight class is disqualified from the tournament due to flagrant misconduct, he/she will lose his/her place finish, award, and all points earned. This lost place finish shall remain unfilled for both place finish and point scoring purposes. Three points shall be deducted from the team score for a flagrant misconduct violation.
 - 2) The team for which a coach is charged with flagrant misconduct shall have five team points deducted from the school's team score, and shall be required to immediately leave the competition area for the duration of the event.
 - 3) Coaches are not allowed to step on the mat while coaching or protesting. Any violation may result in a disqualification from the tournament.
 - c. Flagrant *hansoku make* occurs during a match and disqualifies a contestant from competition, awards and points and includes, but not limited to, performance of reckless actions, intentionally butting, elbowing, kicking, slapping, shoving, and/or biting which may cause injury or significant intimidation.
 - 1) Contestant shall not be allowed to continue to participate in the tournament.
 - 2) Choke holds, arm locks or arm bars are illegal.
 - 3) If a contestant who places in the top six in his/her weight class is disqualified from the tournament due to flagrant *hansoku make*, he/she will lose his/her place finish, award, and all points earned. This lost place finish shall remain unfilled for both place finish and point scoring purposes.
 - 4) The team for which a contestant is charged with flagrant *hansoku make* shall have three team points deducted from the school's team score.
 - d. Non-compliance condition: The contestant will be given two minutes to correct a non-compliance condition. Failure to meet the two-minute deadline will result in a *shido* plus a *shido* for every two minutes thereafter.
3. Misconduct
- a. After the conclusion of a match, contestants or coaches who display displeasure or conduct themselves in a manner unbecoming of the sport shall be warned for the first offense. A second offense shall result in disqualification from the tournament. The disqualified person must immediately leave the premises for the duration of the tournament.

- b. Flagrant misconduct, such as the use of profanity, punching, kicking, biting, head butting, displaying extreme displeasure, etc., shall result in immediate disqualification from the tournament. The disqualified person must immediately leave the premises for the duration of the tournament.
 - c. Coaches are not allowed to step on the mat while coaching or protesting. Any violation may result in a disqualification from the tournament.
 - d. Flagrant *hansoku make* disqualifies a contestant from competition, medals and points. Performance of reckless actions i.e. intentionally kicking, slapping, shoving, which could cause injury or intimidation would be regarded as flagrant *hansoku make*.
4. The penalty for all attacks or blocking with one or two hands or with one or two arms below the belt in *Tachiwaza* will be one *shido* for the first offense, and technical *hansoku make* for the second offense.

I. Protest Procedure

- 1. There shall be an appeals committee for the HHSAA judo state championships, which will consist of three members – the tournament director, the HHSAA judo coordinator and the head official.
- 2. Coaches may submit appeals for matters of procedure or misapplication of the rules and not for the matters of judgment. If the coach protests a judgment call, he/she will be subject to the rules governing misconduct.
- 3. The protest procedure shall operate as follows:
 - a. Coach shall approach the scoring table and ask the match be stopped at the earliest possible moment.
 - b. Coaches will submit their appeal to the referee.
 - c. The referee will consult with the other presiding referees for a decision.
 - d. If the coach is not satisfied with the judgement, he/she should notify the lead referee, who will then consult with the head official and/or the judo coordinator, who will form an appeals committee.
 - e. Coaches may submit appeals at the time of the match and up until the judoka departs from the mat.
 - f. The next match will not begin until the appeal has been decided.
- 4. The appeals committee shall render a decision to the official and the coach.
- 5. The decision of the appeals committee shall be final and not subject to any appeal. The appeal shall be documented and kept by the judo coordinator.

J. Bench and Bench Conduct

- 1. One coach shall be allowed to coach from his/her designated seat.
- 2. The referee has the discretion to warn or eject a coach, contestant, or spectator who is interfering with a match.

K. Safety Area

- 1. When the required safety area on a mat (three meters' width) cannot be met, a minimum width of two meters may be used.
- 2. When the two meter safety area is used, the following edge of the mat rules shall be applied:
 - a. When more than half the body of one contestant is outside the competition area in *newaza* or mat work position.

L. Time Outs

1. Blood Time Out

- a. There shall be a total of four minutes to attend to all blood injuries per contestant during a match. Athletic trainers may attend to the blood injury as many times as allowed in the four minutes. Any clean-up of the mat and/or *gi* shall not be included in the four minutes. Nose plugs are allowed to be used during matches.

2. Injury Time Out

- a. There shall be a total of two minutes per injury for the evaluation of an injured athlete.
- b. A maximum of two visits by an athletic trainer per athlete during a match shall be allowed. On the third visit, the athlete shall forfeit the match.
- c. The final decision as to whether an injured contestant shall continue to compete in his/her match shall be made by the attending athletic trainer.

M. Entries

- a. League slots are determined by the HHSAA league representation formula: # of participating schools in the league divided by the # of participating schools in the State, then multiplied by # of slots per weight class.

$$\frac{\text{\# of Participating Teams in League}}{\text{\# of Participating Teams in State}} \times \text{\# of Slots Per Weight Class}$$

- b. Each league shall determine the method of selecting their entries subject to the limitations of contestants allocated to their league per weight class.
- c. The deadline for entries shall be 8:00 a.m. on the Sunday prior to the tournament.
- d. All contestants must compete in the weight division through which they qualified in their league championship.
- e. Alternates
 - i. If a contestant who qualified for the state tournament is unable to participate, the contestant's league shall be allowed to enter an alternate contestant as a replacement.
 - ii. However, if the contestant's league is unable to fill the open slot with a replacement, the unfilled slot shall be filled by a random drawing of the other leagues' alternate contestants.

VI. UNIFORM

- A. The judo *gi* shall be white or off-white and conform to IJF rules in all other aspects.
- B. Long Hair: A contestant will be allowed an unlimited amount of time to re-tie his/her hair.

VII. SIZE OF TRAVELING TEAMS

Schools may bring an unlimited number of contestants accompanied by authorized coaches. Names of contestants, coaches, and team managers must be listed on the official tournament roster forms.

VIII. SEEDING COMMITTEE

- A. The Seeding Committee shall consist of:

1. HHSAA executive director
 2. HHSAA judo coordinator
 3. A representative from each league
 4. Any other personnel selected by the HHSAA judo coordinator and approved by the HHSAA executive director
- B. The Seeding Committee shall be responsible for all seeding procedures.
1. The first-place finisher from each league will be seeded by the committee based on the past finishes in previous HHSAA tournaments at the same weight class. (Rev. 6/2012)
 2. The champion and runner-up from the same league shall be placed in opposite brackets.
 3. As a secondary criteria, past finishes at previous HHSAA Judo Championships for other weight classes. (Rev. 6/2014)
 4. The HHSAA Seeding Committee shall have the flexibility to adjust the seeding procedures if any discrepancies arise.

IX. AWARDS AND TROPHIES

- A. Permanent trophy for the championship team.
- B. Permanent trophy for the runner-up team.
- C. 12 medals for the championship team.
- D. Medals for the top six places in each weight classification.

X. TOURNAMENT EVALUATION

The HHSAA Sport Coordinator and Tournament Director shall submit an evaluation report and tournament results to the HHSAA Executive Director within two weeks after the tournament.

XI. ADMISSION

General Admission	\$9.00
Senior Citizens (62 and over)	\$5.00
Students (Grades K-12)	\$5.00

Contestants, coaches, and team managers must be listed on their school's Official Tournament Roster for complimentary admission to the tournament. With respect to contestants, only tournament contestants will be allowed into the tournament venue for free. In other words, anyone who competed in the regular season but did not qualify for the state tournament will not be allowed into the tournament for free.



PHYSICIAN RELEASE FOR ATHLETE TO PARTICIPATE WITH SKIN LESION(S)

Student's Name: _____

Release of Medical Information (To be filled out by Parent/Guardian)

The above named student and parent(s)/guardian(s) hereby consent to the release of medical information by Dr(s) _____ to _____ high school to obtain information regarding the (Physician's Name) (Name of School) medical history, records of the below injury or surgery, serious illness and rehabilitation results of the student from his/her physician(s). We understand that the purpose of this request for medical information is to assist the school in the management or rehabilitation of the student's injury/illness. This information is confidential and except as provided in this release will not be otherwise released by the parties in charge of the information. This release remains valid until revoked by the adult student or parent/guardian in writing.

Signature of Parent/Guardian or Adult Student: _____ Date: _____

(Below to be filled out by physician)

Diagnosis: _____ Date of Exam: _____

Location of Lesion(s): _____

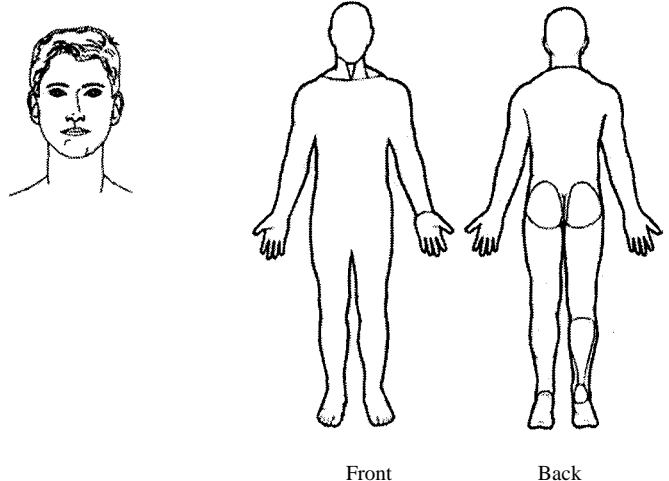
(Mark Location of Lesion(s) on diagram below)

Medication(s) used to treat lesion(s):

Date Treatment Started: _____

This Form Expires on: _____
(Date)

Earliest date may return to participation: _____



Front

Back

Physician's Name: _____
(M.D. or D.O.)

Office Address: _____ Office Phone: _____

Physician's Signature: _____ Date: _____

Note to Providers: Non-contagious lesions do not require treatment prior to return to participation (e.g. eczema, psoriasis, etc.). Please familiarize yourself with NFHS Rules 4-2-3 and 4-2-4 which states:

"ART. 3 ... If a participant is suspected by the referee or coach of having a communicable skin disease or any other condition that makes participation appear inadvisable, the coach shall provide current written documentation from a physician stating that the suspected disease or condition is not communicable and that the athlete's participation would not be harmful to any opponent. This document shall be furnished at the weigh-in or prior to competition in the dual meet or tournament. Covering a communicable condition shall not be considered acceptable and does not make the wrestler eligible to participate. "

"ART. 4 ... If an on-site meet physician is present, he/she may overrule the diagnosis of the physician signing the physician's release form for a wrestler to participate with a particular skin condition. "



Hawaii High School Athletic Association

- P.O. Box 62029 • HONOLULU, HAWAII 96839 •
- PHONE: (808) 587-4495 • FAX: (808) 587-4496
- www.sportshigh.com - info@hhsaa.org •

2015 HHSAA JUDO SOUVENIR T-SHIRT PRE-ORDER FORM

_____ School requests to order the following sizes of the souvenir A4 Drifit T-shirts at \$20.00 per shirt.

Size	Quantity	Price	Total
Small		\$20.00	
Medium		\$20.00	
Large		\$20.00	
X-Large		\$20.00	
XX-Large		\$20.00	
Tourney Program	N/A	N/A	N/A
		GRAND TOTAL	

2014 Judo Tournament Logo has not been created yet. Check back for updated logo.

Email preorders to your respective host (see below) school. Checks payable to HHSAA may be brought to the coaches' meeting/ first day of the tournament. **Note: preorders must be paid in full by first day of the tournament or shirts will be released to the general public.**

DIVISION I:

Blake Moritsugu, Athletic Director
Aiea High School
Phone: (808) 483-7328
E-mail: blake_moritsugu@notes.k12.hi.us

Contact person: _____

Daytime phone: _____

Email Address: _____

HHSAA BOYS CHAMPIONSHIPS

2003 INDIVIDUAL CHAMPIONS

<u>Weight</u>	<u>Name</u>	<u>School</u>	<u>Weight</u>	<u>Name</u>	<u>School</u>
105	Thoran Evans	Kakuku	150	Joel Akimoto	Pearl City
114	Brandon Low	St. Louis	165	Andy Hung	Pearl City
123	Justin Galvez	Mililani	180	Sean Shinjo	Mililani
132	Emile Suehiro	McKinley	200	Shingo Katsura	Moanalua
141	Jeremy Otani	Punahou	275	Eddie Inuma	Pearl City

2003 Team Champion

<u>School</u>	<u>Score</u>	<u>League</u>	<u>Coach</u>
Pearl City	70	OIA	Ivan Yoshimura

2004 INDIVIDUAL CHAMPIONS

<u>Weight</u>	<u>Name</u>	<u>School</u>	<u>Weight</u>	<u>Name</u>	<u>School</u>
105	Thoran Evans	Kakuku	150	Tommy Inuma	Pearl City
114	Gerry Malanog	Leilehua	165	Everret Pavo	Pearl City
123	Patrick Eglinton	McKinley	180	Brad Padua	Leilehua
132	Michael Fujiuchi	McKinley	200	Jordan Fontanilla	KS-Kapalama
141	Johanson Quist	Hilo	275	Les Shiroma	St. Louis

2004 Team Champion

<u>School</u>	<u>Score</u>	<u>League</u>	<u>Coach</u>
Pearl City	51	OIA	Ivan Yoshimura

2005 INDIVIDUAL CHAMPIONS

<u>Weight</u>	<u>Name</u>	<u>School</u>	<u>Weight</u>	<u>Name</u>	<u>School</u>
108	Kirk Shiraki	Mililani	161	Duane Fukumoto	Iolani
114	Derron Maki	Moanalua	178	Christian Pavo	Pearl City
121	Jerrick Feliciano	Mililani	198	Brad Padua	Leilehua
132	Michael Fujiuchi	McKinley	220	Eli Maioho	KS-Kapalama
145	Seth Ching	Pearl City	220+	Floyd Iuta	McKinley

2005 Team Champion

<u>School</u>	<u>Score</u>	<u>League</u>	<u>Coach</u>
Pearl City	58	OIA	Ivan Yoshimura

2006 INDIVIDUAL CHAMPIONS

<u>Weight</u>	<u>Name</u>	<u>School</u>	<u>Weight</u>	<u>Name</u>	<u>School</u>
108	Justin Osumi	Moanalua	161	Daniel Chow	Punahou
114	Reid Oshiro	Punahou	178	Christian Pavo	Pearl City
121	Arnold Toriumi	Punahou	198	Makaio Primacio	Kahuku
132	Michael Fujiuchi	McKinley	220	Kalani Rios	Castle
145	Patrick Eglinton	McKinley	275	Dylan Rush	Kau

2006 Team Champion

<u>School</u>	<u>Score</u>	<u>League</u>	<u>Coach</u>
Punahou	90	ILH	Gregory Chow

2007 INDIVIDUAL CHAMPIONS

<u>Weight</u>	<u>Name</u>	<u>School</u>	<u>Weight</u>	<u>Name</u>	<u>School</u>
108	Brady Lafortune	Moanalua	161	Richard Torres	Kahuku
114	Bill Takeuchi	Pearl City	178	Daniel Chow	Punahou
121	Reid Oshiro	Punahou	198	Christian Pavo	Pearl City
132	Arnold Toriumi	Punahou	220	Andy Toyama	Pearl City
145	Bryan Fujiwara	Moanalua	275	Tyler Lauifi	Pearl City

2007 Team Champion

<u>School</u>	<u>Score</u>	<u>League</u>	<u>Coach</u>
Pearl City	99	OIA	Ivan Yoshimura

2008 INDIVIDUAL CHAMPIONS

<u>Weight</u>	<u>Name</u>	<u>School</u>	<u>Weight</u>	<u>Name</u>	<u>School</u>
108	David Terao	Mid-Pacific	161	Christian Pavo	Pearl City
114	Brady Lafortune	Moanalua	178	Daniel Chow	Punahou
121	Brandon Oshiro	Maryknoll	198	Aaron Puahala	Pearl City
132	Arnold Toriumi	Punahou	220	Harvey Fung	Castle
145	Nicholas Lum	Roosevelt	275	Tyler Lauifi	Pearl City

2008 Team Champion

<u>School</u>	<u>Score</u>	<u>League</u>	<u>Coach</u>
Pearl City	74	OIA	Ivan Yoshimura
Punahou	74	ILH	Gregory Chow

2009 INDIVIDUAL CHAMPIONS

<u>Weight</u>	<u>Name</u>	<u>School</u>	<u>Weight</u>	<u>Name</u>	<u>School</u>
108	Jordan Ng	Punahou	161	Evan Masutani	Iolani
114	David Terao	Mid-Pacific	178	Branen Yamamoto	Moanalua
121	Brady Lafortune	Moanalua	198	Chad Sing Chow	Pearl City
132	Reid Oshiro	Punahou	220	Kyle Tsubota	Lutheran
145	Justin Osumi	Moanalua	275	Manako Tuifua	Kailua

2009 Team Champion

<u>School</u>	<u>Score</u>	<u>League</u>	<u>Coach</u>
Punahou	72	ILH	Gregory Chow

2010 INDIVIDUAL CHAMPIONS

<u>Weight</u>	<u>Name</u>	<u>School</u>	<u>Weight</u>	<u>Name</u>	<u>School</u>
108	Brendan Chang	Maryknoll	161	Damon Hom, Jr.	McKinley
114	Jordan Ng	Punahou	178	Punahale Soriano	Kahuku
121	David Terao	Mid-Pacific	198	Myer Alokoa	Hawaii Center for the Deaf & Blind
132	Brady Lafortune	Moanalua	220	Dane Paihi Pestano	KS-Kapalama
145	Tyler Yonemori	Waiakea	275	Keith Chargulaf-Tuilepa	Farrington

2010 Team Champion

<u>School</u>	<u>Score</u>	<u>League</u>	<u>Coach</u>
Moanalua	69	OIA	Brandon Maki

2011 INDIVIDUAL CHAMPIONS

<u>Weight</u>	<u>Name</u>	<u>School</u>	<u>Weight</u>	<u>Name</u>	<u>School</u>
108	Joshua Terao	Mid-Pacific	161	Jordan Ogata	Mililani
114	Brendan Chang	Maryknoll	178	Justin Fujiwara	Moanalua
121	David Terao	Mid-Pacific	198	Myer Alokoa	Kalani
132	Tyler Kono	Kapolei	220	Dane Paihi Pestano	KS-Kapalama
145	Tyler Yonemori	Waiakea	275	Lukela Los Banos	Maryknoll

2011 Team Champion

<u>School</u>	<u>Score</u>	<u>League</u>	<u>Coach</u>
Moanalua	59	OIA	Brandon Maki

2012 INDIVIDUAL CHAMPIONS

<u>Weight</u>	<u>Name</u>	<u>School</u>	<u>Weight</u>	<u>Name</u>	<u>School</u>
108	Jordan Ng	Iolani	161	Royce Mori	Damien
114	Justin Raymond	Konawaena	178	Chaeden Grace Reyes	Farrington
121	Bryson Castro	Mililani	198	Justin Fujiwara	Moanalua
132	Josh Terao	Mid-Pacific	220	D. Paihi Pestano	KS-Kapalama
145	Evan Uehara	Punahou	275	Weston Akamine	Roosevelt

2012 Team Champion

<u>School</u>	<u>Score</u>	<u>League</u>	<u>Coach</u>
Moanalua	58	OIA	Brandon Maki

2013 INDIVIDUAL CHAMPIONS

<u>Weight</u>	<u>Name</u>	<u>School</u>	<u>Weight</u>	<u>Name</u>	<u>School</u>
108	Jordan Ng	Iolani	161	Brandon Lum	Iolani
114	Kelson Onigama	Moanalua	178	Royce Mori	Damien
121	Brendan Chang	Maryknoll	198	Chaeden Grace-Reyes	Moanalua
132	Josh Terao	Mid-Pacific	220	Dane Pestano	KS-Kapalama
145	Kekua Marumoto	Kapolei	275	Jacob Lewis	Damien

2013 Team Champion

<u>School</u>	<u>Score</u>	<u>League</u>	<u>Coach</u>
KS - Kapalama	66	ILH	Christian Aarona

2014 INDIVIDUAL CHAMPIONS

<u>Weight</u>	<u>Name</u>	<u>School</u>	<u>Weight</u>	<u>Name</u>	<u>School</u>
108	Cameron Kato	Punahou	161	Alan Ikehara	Waiakea
114	Weston Kogachi	Punahou	178	Paul Joe	Pearl City
121	Cole Kato	Campbell	198	Zorich Palimo'o	Moanalua
132	Joshua Terao	Mid-Pacific	220	Dayton Furuta	Mililani
145	Cole Chandler	Mid-Pacific	275	Zephania Pavao	Keaau

2014 Team Champion

<u>School</u>	<u>Score</u>	<u>League</u>	<u>Coach</u>
Kapolei	57	OIA	Marc Narciso

HHSAA GIRLS CHAMPIONSHIPS

2003 INDIVIDUAL CHAMPIONS

<u>Weight</u>	<u>Name</u>	<u>School</u>	<u>Weight</u>	<u>Name</u>	<u>School</u>
98	Tabitha Lum	Maryknoll	128	Kelianne Chong	Kealakehe
103	Catherine Chan	Iolani	136	Amber Horn	Pearl City
109	Corey Jo Tashima	Pearl City	145	Chelsea Berdon	KS-Kapalama
115	Caylene Valdez	Moanalua	160	Kehau Kamauoha	Kahuku
121	Kimberly Kido	Kailua	200	Maimiti Ho	KS-Kapalama

2003 Team Champion

<u>School</u>	<u>Score</u>	<u>League</u>	<u>Coach</u>
Kahuku	66	OIA	Reggie Torres

2004 INDIVIDUAL CHAMPIONS

<u>Weight</u>	<u>Name</u>	<u>School</u>	<u>Weight</u>	<u>Name</u>	<u>School</u>
98	Tabitha Lum	Maryknoll	128	Kara Takasaki	Punahou
103	Catherine Chan	Iolani	136	April Due	Kapolei
109	Corey Jo Tashima	Mililani	145	Jenna Nihipali	Kahuku
115	Lianne Tomishima	McKinley	160	Alicia Fu	Moanalua
121	Roslyn Maiava	Kahuku	200	Randolyn Nohara	KS-Kapalama

2004 Team Co-Champion

<u>School</u>	<u>Score</u>	<u>League</u>	<u>Coach</u>
Farrington	51	OIA	Brandon Teshima
Kahuku	51	OIA	Reggie Torres

2005 INDIVIDUAL CHAMPIONS

<u>Weight</u>	<u>Name</u>	<u>School</u>	<u>Weight</u>	<u>Name</u>	<u>School</u>
81	No Entries		125	Nikki Morin	La Pietra
90	Kira Tamashiro	Iolani	139	Lianne Tomishima	McKinley
97	Tabitha Lum	Maryknoll	154	Kelli Fujihara	Pearl City
106	Alicia Huang	La Pietra	172	Kalei Kawa`a	KS-Kapalama
114	Tani Ader	Farrington	172+	Kanoe Tani	Kahuku

2005 Team Champion

<u>School</u>	<u>Score</u>	<u>League</u>	<u>Coach</u>
Pearl City	63	OIA	Jason Katoda

2006 INDIVIDUAL CHAMPIONS

<u>Weight</u>	<u>Name</u>	<u>School</u>	<u>Weight</u>	<u>Name</u>	<u>School</u>
98	Taylor Ibera	Farrington	129	Lianne Tomishima	McKinley
103	Megan Morisada	Iolani	139	Jillian Fontanilla	Pearl City
109	Samantha Batoon	Farrington	154	Relle Sato	Hilo
115	Tani Ader	Farrington	172	Marlene Suckel	Kahuku
122	Danica Kamakana	Moanalua	220	Kanoe Tani	Kahuku

2006 Team Champion

<u>School</u>	<u>Score</u>	<u>League</u>	<u>Coach</u>
Farrington	72	OIA	Brandon Teshima

2007 INDIVIDUAL CHAMPIONS

<u>Weight</u>	<u>Name</u>	<u>School</u>	<u>Weight</u>	<u>Name</u>	<u>School</u>
98	Taylor Ibera	Farrington	129	Risha Mishima	Hawaii Baptist
103	Keiko Akamine	Iolani	139	Nora Kent	McKinley
109	Carla Watase	Iolani	154	Relle Sato	Hilo
115	Megan Yamaguchi	Kalani	172	Asami Kobata	McKinley
122	Lianne Tomishima	McKinley	220	Randolyn Nohara	KS-Kapalama

2007 Team Champion

<u>School</u>	<u>Score</u>	<u>League</u>	<u>Coach</u>
McKinley	53	OIA	Lance Iida

2008 INDIVIDUAL CHAMPIONS

<u>Weight</u>	<u>Name</u>	<u>School</u>	<u>Weight</u>	<u>Name</u>	<u>School</u>
98	Taylor Ibera	Farrington	129	Tani Ader	Farrington
103	Keiko Akamine	Iolani	139	Risha Mishima	Hawaii Baptist
109	Brittany Balanay	McKinley	154	Amanda Soliai	Kahuku
115	Chrissy Chow	Punahou	172	Patrice Yamane	Castle
122	Megan Yamaguchi	Kalani	220	Olivia Fatongia	Iolani

2008 Team Champion

<u>School</u>	<u>Score</u>	<u>League</u>	<u>Coach</u>
Pearl City	63	OIA	Robin Puahala

2009 INDIVIDUAL CHAMPIONS

<u>Weight</u>	<u>Name</u>	<u>School</u>	<u>Weight</u>	<u>Name</u>	<u>School</u>
98	Taylor Ibera	Farrington	129	Risha Mishima	Hawaii Baptist
103	Macy Yonamine	KS-Kapalama	139	Rachael Ostovich	Moanalua
109	Brittany Balanay	McKinley	154	J.T. Ojerio	Punahou
115	Chrissy Chow	Punahou	172	Kaimana Lundquist	Punahou
122	Mindy Chow	Punahou	220	Keisha Marcelino	Waipahu

2009 Team Champion

<u>School</u>	<u>Score</u>	<u>League</u>	<u>Coach</u>
Punahou	91	ILH	Gregory Chow

2010 INDIVIDUAL CHAMPIONS

<u>Weight</u>	<u>Name</u>	<u>School</u>	<u>Weight</u>	<u>Name</u>	<u>School</u>
98	Erin Uehara	Punahou	129	Chrissy Chow	Punahou
103	Marissa Rogers	McKinley	139	Mindy Chow	Punahou
109	Brittany Balanay	McKinley	154	Kaimana Lundquist	Punahou
115	Bree Rapoza	KS-Kapalama	172	Mei Ling Keiki	Pearl City
122	Brittney Shinsato	Kalani	220	Sanoe Spencer	Pearl City

2010 Team Champion

<u>School</u>	<u>Score</u>	<u>League</u>	<u>Coach</u>
Punahou	85	ILH	Gregory Chow

2011 INDIVIDUAL CHAMPIONS

<u>Weight</u>	<u>Name</u>	<u>School</u>	<u>Weight</u>	<u>Name</u>	<u>School</u>
98	Kaelynn Canyete	Kapolei	129	Chrissy Chow	Punahou
103	Marissa Rogers	McKinley	139	Mindy Chow	Punahou
109	Brittany Balanay	McKinley	154	Tiare Kaye	Punahou
115	Bree Rapoza	KS-Kapalama	172	Makana Borden	Kaiser
122	Marisa Fukunaga	Roosevelt	220	Sanoe Spencer	Pearl City

2011 Team Champion

<u>School</u>	<u>Score</u>	<u>League</u>	<u>Coach</u>
Punahou	58	ILH	Gregory Chow

2012 INDIVIDUAL CHAMPIONS

<u>Weight</u>	<u>Name</u>	<u>School</u>	<u>Weight</u>	<u>Name</u>	<u>School</u>
---------------	-------------	---------------	---------------	-------------	---------------

98	Kaelynn Canyete	Kapolei	129	Tanalei Louis	Waiakea
103	Megan Aina	KS-Hawaii	139	Mindy Chow	Punahou
109	Diane Mikuni	Kapolei	154	Tiara Kaye	Punahou
115	Nicole Taniguchi	Punahou	172	Lia Nakamura	Hilo
122	Bree Rapoza	KS-Kapalama	220	Sanoë Spencer	Pearl City

2012 Team Champion

<u>School</u>	<u>Score</u>	<u>League</u>	<u>Coach</u>
Pearl City	71	OIA	Robin Puahala

2013 INDIVIDUAL CHAMPIONS

<u>Weight</u>	<u>Name</u>	<u>School</u>	<u>Weight</u>	<u>Name</u>	<u>School</u>
98	Chale Chee	Kahuku	129	Teshya Alo	KS-Kapalama
103	Jahya Costa	Kahuku	139	Pharin Hicks	Mililani
109	Kaylin Castro	Mililani	154	Jaclyn Fontanilla	KS-Kapalama
115	Kristen Kojima	Roosevelt	172	Lia Nakamura	Hilo
122	Bree Rapoza	KS-Kapalama	220	Aimee Shiraki	Konawaena

2013 Team Champion

<u>School</u>	<u>Score</u>	<u>League</u>	<u>Coach</u>
Pearl City	72	OIA	Robin Puahala

2014 INDIVIDUAL CHAMPIONS

<u>Weight</u>	<u>Name</u>	<u>School</u>	<u>Weight</u>	<u>Name</u>	<u>School</u>
98	Jackie Akena	Moanalua	129	Skye Matsuura	Waiakea
103	Kristyn Takai	Moanalua	139	Kari Okubo	Aiea
109	Chastyne Dolor	Pearl City	154	Jaclyn Fontanilla	KS-Kapalama
115	Haylie Shinsato	Mililani	172	Taylor Jean Allen	Campbell
122	Shana Dillner	KS-Kapalama	220	Sabrina Hollins	Waipahu

2014 Team Champion

<u>School</u>	<u>Score</u>	<u>League</u>	<u>Coach</u>
Pearl City	104	OIA	Robin Puahala