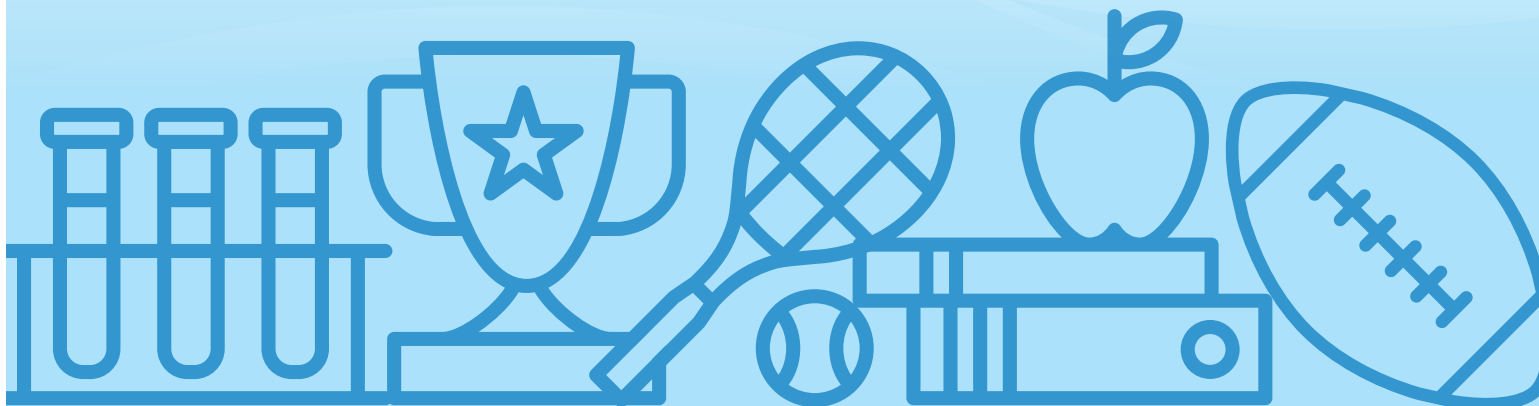


hmsa
KAIMANA
AWARDS
& SCHOLARSHIP PROGRAM

FREQUENTLY ASKED QUESTIONS





HMSA Sponsorship

1. What is the HMSA Kaimana Awards & Scholarship Program?

The program recognizes and awards high schools and their students for all-around excellence and their commitment to well-being through achievements in academics, athletics, community service, healthy activities, and sportsmanship. This is the 13th year of the program, which HMSA and the Hawaii High School Athletic Association (HHSAA) launched during the 2005-06 school year.



2. How much money does HMSA contribute to the overall sponsorship?

HMSA provides more than \$140,000 each year to support high school students, their schools, and the HHSAA. It's one of the largest corporate sponsorships of high school athletics in Hawaii's history. Over the last 12 years, the Kaimana Program has contributed nearly \$1 million in college scholarships and financial aid to Hawaii high schools and the HHSAA.

3. What's included in the program?

There are two parts of the Kaimana Awards & Scholarship Program:

- a. HMSA Kaimana Awards for schools.
- b. HMSA Kaimana Scholarships for students.

HMSA Kaimana Awards

4. Which schools are eligible for the awards?

All public and independent HHSAA member high schools statewide are eligible to win HMSA Kaimana Awards. Winners are awarded in each of the state's five leagues, which is comprised of the Big Island Interscholastic Federation (BIIF), the Interscholastic League of Honolulu (ILH), the Kauai Interscholastic Federation (KIF), the Maui Interscholastic League (MIL), and the Oahu Interscholastic Association (OIA).

5. Do schools compete in their own league for each HMSA Kaimana Award?

Yes. Each school competes against other schools in their own league. For example, an ILH school competes against other ILH schools for a Kaimana Award.



6. How many awards are presented each year?

For the 2017-18 school year, there will be nine awards recognizing schools from each league. Schools compete within each league based on high school enrollment and are eligible for one of the following awards:

LEAGUE	SCHOOL SIZE*	2017-18 AWARDS
Big Island Interscholastic Federation	Large school - 200 students or more	1
	Small school - Fewer than 200 students	1
Interscholastic League of Honolulu	Large school - 400 students or more	1
	Small school - Fewer than 400 students	1
Kauai Interscholastic Federation		1
Maui Interscholastic League	Large school - 350 students or more	1
	Small school - Fewer than 350 students	1
Oahu Interscholastic Association	Large school - 1,300 students or more	1
	Small school - Fewer than 1,300 students	1

* Subject to change. For final numbers, visit hmsa.com/kaimana.

7. How are the winning schools from each league determined?

Schools can earn points during the school year for academics, athletics, community service, healthy activities, and sportsmanship. The school with the most points in each division (based on high school enrollment) will receive an award.

a. Academics: 100 points

- Points are earned based on the collective grade point average of all student athletes in league-recognized team sports. The leagues and schools can choose which semester, quarter, or any combination of the two to report to the HHSAA. GPA information representing all student athletes can be submitted in a one-time report to the HHSAA after the third quarter.
- Points are awarded based on the percentage of student athletes who've earned a GPA of 2.75 or higher. For example, if 55 percent of a school's student athletes earn a 2.75 GPA or higher, the school earns 55 points.

CATEGORY	POINTS AVAILABLE
Academics	100
Athletics	100
Community Service	100
Healthy Activities	100
Sportsmanship	100

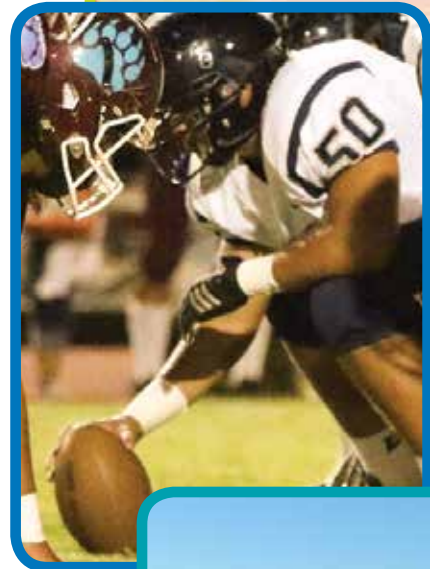


b. Athletics: 100 points

- i. Points are earned according to the percentage of the total student body that participates in a team sport recognized by their league. For example, if 100 percent of the student body participates in a league-recognized team sport, the school will earn 100 points. A 62 percent participation rate would earn 62 points.
- ii. Points are also contingent on the number of league-sanctioned sports offered. Schools offering 15 or more sports are eligible to receive the maximum 100 points. Schools with fewer than 15 will receive a percentage of the maximum depending on the number of sports offered. For example, a school with 100 percent participation that offers 10 sports is eligible to receive up to 50 points.
- iii. Leagues that follow Title IX reporting standards may have more than 100 percent participation due to the number of students who participate in more than one league-recognized sport. However, the maximum points awarded in this category is 100.

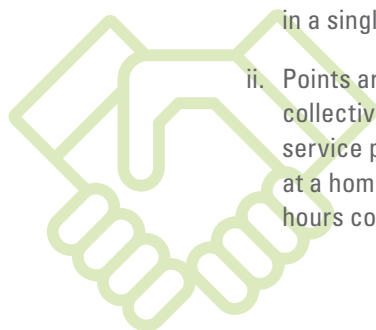
PARTICIPATION IN LEAGUE-SANCTIONED SPORTS

NUMBER OF SPORTS OFFERED	MAXIMUM POINTS AVAILABLE
15 or more	100
10-14	50
6 to 9	40
5 or fewer	30



c. Community service: 100 points

- i. Each school receives points for community service performed by its entire student body. The total number of community service hours can be submitted in a single report to the HHSAA.
- ii. Points are awarded based on the number of collective student hours worked on community service projects. For example, if one student works at a homeless shelter for four hours, that's four hours counted toward a school's total.



COMMUNITY SERVICE

Number of collective hours completed by students during the school year	Points Earned Based on School Enrollment (High school students only)				
	< 100	100 - 500	501 - 1,000	1,001 - 1,500	> 1,500
10,000 hours or more	100	100	100	100	100
7,501 - 9,999 hours	100	100	100	100	80
5,001 - 7,500 hours	100	100	100	80	60
3,001 - 5,000 hours	100	100	80	60	40
1,001 - 3,000 hours	100	100	60	40	20
751 - 1,000 hours	100	100	40	20	10
501 - 750 hours	100	80	20	0	0
201 - 500 hours	80	60	0	0	0
100 - 200 hours	40	0	0	0	0
Fewer than 100 hours	0	0	0	0	0

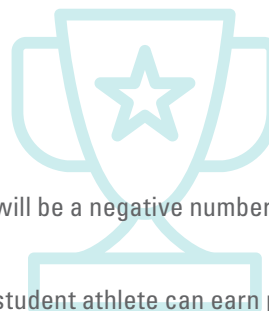
d. Healthy activities: 100 points

- i. Schools that engage students and the community will earn 10 points for each healthy activity reported. Healthy activities can include those listed on the right. For a list of healthy activities, see the “Healthy Activities” sheet or visit hmsa.com/kaimana. Points are counted for high school activities only.

ACTIVITY EXAMPLES	POINTS
Health Fair	10
Blood Drive	10
School Garden	10
Public Service Announcement	10
Fun Run	10

e. Sportsmanship: 100 points

- i. Each school is expected to display good sportsmanship both on and off the field.
- ii. Schools start with 100 points. Points are deducted when an incident that reflects poor sportsmanship is reported.
- iii. If a school loses more than 100 points, its score for this category will be a negative number that impacts its total points.
- iv. The leagues may institute a process in which a school, coach, or student athlete can earn points to replace points that were deducted. Individual leagues will develop and implement their own policy in this area.



TYPE OF CONDUCT	DESCRIPTION	PENALTY (POINTS)
Level IV	1. Coach's ejection from a game for unsportsmanlike conduct. This applies to all members of the coaching staff. 2. Any physical damage exceeding \$250 caused by a team member to the venue including furnishings and equipment or other ancillary facilities or vehicles.	50
Level III	1. Any physical altercation with any participant (e.g., official, player, fan, or other spectator) at a league-recognized event. 2. Any incident where a player is ejected from a game for unsportsmanlike conduct.	25
Level II	Any physical damage of \$250 or less caused by a team member to the venue including furnishings and equipment or other ancillary facilities or vehicles.	15
Level I	Making obscene comments or gestures at officials, opposing teams, fans, or other spectators.	10

8. How do I submit my school's information?

Schools will receive forms later in the school year to help them tally their points. They will submit all information required for scoring to the HHSAA in late spring 2018.

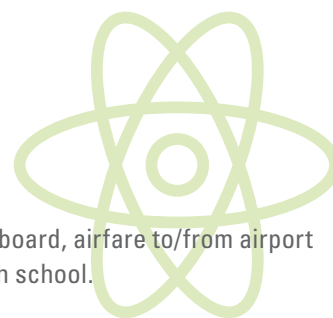
9. When will I know if my school won?

The winning schools will be notified in May and recognized at the HMSA Kaimana Awards & Scholarship luncheon in June 2018.

10. When will the winning schools receive the award?

Representatives from each winning school will be invited to receive their HMSA Kaimana Award at the luncheon. Representatives of the winning schools and scholarship recipients on the Neighbor Islands will be provided with round-trip airfare for the event.

HMSA Kaimana Scholarships



11. What can I use an HMSA Kaimana Scholarship for?

This is a general education scholarship that can be used for tuition, room and board, airfare to/from airport nearest school, laptop or desktop computers, or books for education after high school.

12. How many scholarships are awarded?

For the 2017-18 school year, up to 15 scholarships will be awarded to seniors in each of the five leagues.

Scholarships will be awarded as follows:

LEAGUE	NUMBER OF SCHOLARSHIPS
Big Island Interscholastic Federation	2
Interscholastic League of Honolulu	4
Kauai Interscholastic Federation	2
Maui Interscholastic League	2
Oahu Interscholastic Association	5

13. How much is each scholarship worth?

Each scholarship is worth \$5,000.

14. What are the criteria for applying for an HMSA Kaimana Scholarship?

You must:

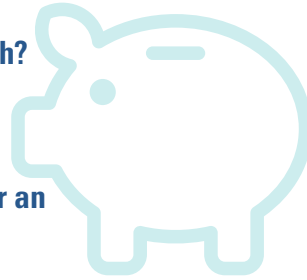
- Be a high school senior graduating from a Hawaii high school in 2018.
- Have a minimum cumulative grade-point average of 2.75 verified by an official school transcript that's submitted with your application.
- Have participated on a league-recognized team during one or more of your high school years. Special focus is given to students who play lower-profile sports.
- Have participated in community service projects in addition to school activities.
- Submit recommendations from two faculty members from your school that detail your athletic dedication and determination, academic performance, sportsmanship, and personal character.
- Submit a brief essay on your high school experience and plans after high school.

15. How are scholarship recipients selected?

Scholarship selections are based on academic and athletic achievements, community involvement, and sportsmanship. Applications are screened and a committee of business and community leaders select the recipients.

16. When do I find out if I won?

Scholarship recipients will be notified by May 1. You'll also be invited to the HMSA Kaimana Awards & Scholarship luncheon in June 2018, where we'll recognize you for your achievements.



17. When is the deadline to apply?

Completed applications, essays, and letters of recommendation must be postmarked by Friday, February 9, 2018.

HMSA—Kaimana Scholarship
8/COMM
P.O. Box 860
Honolulu, HI 96808-0860

You may also drop off your application at the following locations.
Drop-off deadline is 4 p.m. on Friday, February 9, 2018.

No exceptions.

Kaimuki High School
Administrative Office
2705 Kaimuki Ave.

HMSA Center @ Honolulu
818 Keeaumoku St.

HMSA Center @ Pearl City
Pearl City Gateway
1132 Kuala St.

HMSA Center @ Hilo
303A E. Makaala St.

HMSA Kona Office
Henry St., Suite 301

HMSA Kauai Office
4366 Kukui Grove St., Suite 103

HMSA Maui Office
33 Lono Ave., Suite 350



18. Where can I get an application?

You can find it on HMSA's website (hmsa.com/kaimana) and the HHSAA's website (sportshigh.com).

19. Will I receive a check if I win?

Yes. You'll get a check from HMSA after you request reimbursement for eligible educational expenses from the HHSAA, which processes the paperwork. Scholarship funds must be used within 12 months from the award date.



20. Are there any other conditions regarding the scholarship?

Yes. If you plan to continue your athletic career in college, the scholarship is subject to NCAA rules and regulations. Check with your college athletic department's compliance office to verify your eligibility to use the Kaimana Scholarship.



hmsa
KAIMANA
AWARDS
& SCHOLARSHIP PROGRAM

HAWAII HIGH SCHOOL
HHSA
ATHLETIC ASSOCIATION



An Independent Licensee of the Blue Cross and Blue Shield Association