

Hawaii High School Athletic Association  
Judo State Championships  
Saturday, May 9, 2026  
Neal Blaisdell Arena

**JUDO STATE CHAMPIONSHIPS  
SATURDAY, MAY 9, 2026  
NEAL BLAISDELL ARENA**

**HAWAII HIGH SCHOOL ATHLETIC ASSOCIATION**

Executive Director.....Chris Chun  
Associate Director ..... Russ Aoki  
Assistant Director .....Harley Simon  
General Manager ..... Luther Beck  
HHSAA Judo Coordinator..... Blake Moritsugu  
HHSAA Assistant Judo Coordinator ..... Natalie Iwamoto

**TOURNAMENT COMMITTEE**

Host School ..... Moanalua High School  
Rules, Scoring, Officials & Appeals Committee .....Ed Hanashiro and Blake Moritsugu  
Awards and Ceremony ..... Moanalua High School  
Results and technology ..... Rick Williams  
Weigh-In..... OIA & ILH  
Big Island Interscholastic Federation ..... Iris McGuire, Executive Director  
..... Kalei Namohala, Coordinator  
Interscholastic League of Honolulu ..... Blane Gaison, Executive Director  
..... Kena Heffernan, Coordinator  
Maui Interscholastic League.....Joseph Balangitao, Executive Director  
..... Greg Harris, Coordinator  
Oahu Interscholastic Association..... Bryce Kaneshiro, Executive Director  
..... David Lane, Coordinator

**SPECIAL THANKS**

Title Sponsor .....The Odom Corporation  
Neal S. Blaisdell Center.....

**THE ODOM CORPORATION / HAWAII HIGH SCHOOL ATHLETIC ASSOCIATION  
JUDO STATE CHAMPIONSHIPS  
SATURDAY, MAY 9, 2026  
NEAL S. BLAISDELL ARENA**

**TOURNAMENT INFORMATION**

**I. HHSAA JUDO REGULATIONS**

HHSAA Judo Regulations may be found in the HHSAA Handbook.

**II. LEAGUE REPRESENTATION**

League Representation as of 4/12/2026. See the Judo section of [hhsaa.org](http://hhsaa.org) for current representation.

	<b>BOYS</b>	<b>GIRLS</b>
<b>OIA</b>	7	7
<b>ILH</b>	4	4
<b>BIIF</b>	3	3
<b>MIL</b>	2	2
<b>TOTAL</b>	16	16

**III. ENTRIES**

The deadline for **team entries** is 11:59 pm on **Saturday, May 2, 2026**.

Contestants, coaches, and team managers must be listed on their school's Official Tournament Roster for complimentary admission to the tournament. With respect to contestants, only tournament contestants will be allowed into the tournament venue for free. Anyone who competed in the regular season but did not qualify for the state tournament will not be allowed into the tournament for free. No additions to the entry list (Official Tournament Roster) will be accepted on the day of the tournament.

**IV. SEEDINGS/PAIRINGS COMMITTEE**

The Seedings/Pairings Committee Meeting will be held at Moanalua High School at 1:00 pm on Sunday, May 3, 2026.

## **V. SCHEDULE**

### **Saturday, May 9, 2026**

8:30 a.m.....Weigh-in  
9:30 a.m.....Doors open to the general public  
10:00 a.m.....Coaches meeting  
10:30 a.m.....Start of matches

Note: A scale will be made available to check weight at 7:30 – 8:20 a.m.

## **VI. CODE OF CONDUCT**

The coach shall have direct responsibility for the conduct of team members prior to, during, and after tournament competition (in the hotel, in public, at the tournament, transporting to and from the tournament site). Schools and individuals will be held liable for any damages incurred at the tournament site.

## **VII. STATE TOURNAMENT DISQUALIFICATION RULE**

Any student-athlete or coach disqualified before, during, or after a state tournament game/match/event for unsportsmanlike conduct, flagrant verbal misconduct, or flagrant physical misconduct shall be disqualified from his/her next scheduled state tournament game/match/event for that sport. The student-athlete or coach has the right to appeal any such disqualification to an appeals committee for the particular sport. Should a student-athlete or coach be disqualified from the final state tournament game/match/event for that sport, said disqualification shall NOT carry over to the following school year's state tournament for that sport. Instead, the student-athlete's or coach's league shall determine any appropriate penalty or sanction.

## **JUDO**

### **I. SPECIFIC OBJECTIVES**

- A. To determine the state individual and team championships.
- B. To promote interest in judo on the part of students, school, and community.
- C. To promote individual, team, school, and spectator citizenship.

### **II. OFFICIALS**

#### **A. Selection and Assignments**

- 1. Officials may be selected from all participating leagues. Names of qualified officials may be sent to the HHSAA Executive Director by a league's Executive Secretary or his/her representative.
- 2. Selection and assignment of officials shall be made by the HHSAA Executive Director and HHSAA Sport Coordinator.
- 3. There shall be one judge and two referees for each match.

#### **B. Financial Allowance**

- 1. Referees and judges shall be paid based upon HHSAA rates.
- 2. HHSAA rate: \$3.00 per match

### **III. ELIGIBILITY (SEE HHSAA HANDBOOK)**

### **IV. RULES GOVERNING THE TOURNAMENT**

- A. The Contest Rules of the International Judo Federation ("IJF"), except as modified herein, shall govern all matches.
- B. Coaches are reminded to instruct their athletes of the tournament venue's regulations and to abide by these regulations.
- C. The NFHS Wrestling Rules 4-2-3 through 4-2-5 shall apply to situations involving communicable skin diseases or any other skin condition.

ART. 3... If a participant is suspected by the referee or coach of having a communicable skin disease or any other condition that makes participation appear inadvisable, the coach shall provide current written documentation as defined by the NFHS or the state associations, from an appropriate health-care professional stating that the suspected disease or condition is not communicable, and that the athlete's participation would not be harmful to any opponent. This document

shall be furnished at the weigh-in for the dual meet or tournament. The only exception would be if a designated, on-site meet appropriate health-care professional is present and is able to examine the wrestler immediately after the weigh-in. Covering a communicable condition shall not be considered acceptable and does not make the wrestler eligible to participate. (See NFHS Communicable Disease Procedures in Appendix D on page 87)

ART. 4... If a designated, on-site meet appropriate health-care professional is present, he/she may overrule the diagnosis of the appropriate health-care professional signing the medical release form for a wrestler to participate or not participate with a particular skin condition.

ART. 5... A contestant may have documentation from an appropriate health-care professional only indicating a specific condition such as a birthmark or other non-communicable skin conditions such as psoriasis and eczema, and that documentation is valid for the duration of the season. It is valid with the understanding that a chronic condition could become secondarily infected and may require re-evaluation.

Also, the HHSAA's "Physician Release for Athlete to Participate with Skin Lesion(s)" shall be utilized as appropriate. See attached.

D. The teams are required to bring their own blue belts to the state tournament.

## V. TOURNAMENT FORMAT

A. Type of tournament – Modified double-elimination, held on one day. All contestants losing in the championship rounds will move into the consolation rounds.

B. There shall be a maximum of 16 entries in each weight classification. Each school is allowed up to two (2) entries in each weight class. The scorer from the school (when there is more than one participant from a school in a given weight class) shall be the higher finisher from that school in the weight class.

C. The 10 Boys weight classifications are:

- |             |              |
|-------------|--------------|
| 1. 108 lbs. | 6. 161 lbs.  |
| 2. 114 lbs. | 7. 178 lbs.  |
| 3. 121 lbs. | 8. 198 lbs.  |
| 4. 132 lbs. | 9. 220 lbs.  |
| 5. 145 lbs. | 10. 285 lbs. |

The 10 Girls weight classifications are:

- |             |             |
|-------------|-------------|
| 1. 98 lbs.  | 6. 129 lbs. |
| 2. 103 lbs. | 7. 139 lbs. |
| 3. 109 lbs. | 8. 154 lbs. |
| 4. 115 lbs. | 9. 172 lbs. |

5. 122 lbs.

10. 220 lbs.

#### D. Scoring

##### 1. Individual Match Scoring

10 points – win by *ippon* or equivalent

7 points – win by *wazari* or equivalent

5 points – win by *yuko* or equivalent

Note: All cancelled out points shall not count in the individual match score. For example, if Contestant A scores a *wazari*, and Contestant B also scores a *wazari*, but Contestant A also scores a *yuko* before the end of the match, Contestant A's team gets five points, as the *wazaris* cancel each other out.

##### 2. Team Scoring

For team scoring purposes, the following points shall be awarded per each weight class:

a) 1<sup>st</sup> Place – 16 points

b) 2<sup>nd</sup> Place – 12 points

c) 3<sup>rd</sup> Place – 9 points

d) 4<sup>th</sup> Place – 7 points

e) 5<sup>th</sup> Place – 5 points

f) 6<sup>th</sup> Place – 3 points

Note: A school that enters two participants in a weight class does not have to designate one of the two participants for scoring purposes prior to the start of the tournament. The participant who is the higher finisher shall automatically be counted for team scoring purposes.

#### E. Weigh-In

1. Coaches from at least two different schools shall conduct the official weigh-in.
2. Two certified scales shall be available at the tournament site during weigh-in.
3. All Competitors to weigh-in with T-shirt and shorts. This will allow for weigh-ins to be done in the gym and not require use of locker room or bathrooms. A .22 pound weight allowance to align with IJF. (Rev 6/2025) ~~Male contestants shall strip to underwear, shorts, or less, and shall weigh in barefooted. Female contestants shall wear a bathing suit or t-shirt and shorts or less and be barefooted.~~
4. During weigh-in, the actual weight of the contestant shall be written on the weigh-in sheet. The contestant's first and last name shall be clearly printed.

5. All participants must weigh-in between one and one-half (1 ½) hours to one-half (1/2) hour prior to the start of the tournament.
6. All contestants shall be present in and remain in the designated weigh-in area at the time established by the meet administration. Contestants shall not leave the designated weigh-in area unless permission is granted by the meet administration. The weigh-in shall proceed through the weight classes beginning with the lowest weight class and end immediately upon completion of the highest weight class. A contestant shall weigh in only for one weight class during the weigh-in period. If only one scale is available, a contestant may step on and off that scale two times to allow for mechanical inconsistencies in the scale. If multiple scales are available, a contestant may step on and off the first scale two times to allow for mechanical inconsistencies in that scale. If the contestant fails to make weight on the first scale, the contestant shall immediately step on each available scale one time in an attempt to make weight. During time off the scale(s), activities that promote dehydration are prohibited.

#### F. Tournament Site

1. Unless otherwise agreed upon between the OIA and ILH, the hosting of the HHSAA State Judo Tournament shall be rotated as follows: OIA-ILH
2. The HHSAA Executive Director shall select the tournament site.

#### G. Length of Matches

1. All winners bracket matches shall be four minutes, including the 1<sup>st</sup>, 3<sup>rd</sup>, and 5<sup>th</sup> place matches. *(Rev. 6/2012)*
2. Unless otherwise noted, all consolation bracket matches shall be three minutes.
3. Sudden-death overtime will be implemented in the case of a tie at the end of the regulation *(Rev. 6/2017)*

#### H. Video Assistance Referee (VAR)

When possible, use the Camera VAR System in conjunction with 2 corner judges and 1 center referee (i.e. referee team) at the HHSAA State Judo Tournament

##### Use/Restrictions

- a. VAR to be initiated by only by Mat Captain (coaches/athletes cannot ask for VAR) and only for the following:
  - i. Direct Hansoku make decisions
  - ii. To confirm the awarding of a score.
  - iii. Flagrant conduct decisions.
- b. Var to be viewed only by referees (coaches/athletes cannot view VAR)
- c. VAR to be used by the referee team to assist in their ultimate decision.
- d. Decision by the referee team is final.
- e. VAR cannot be used by anyone off the mat (i.e. not part of the referee

team) to change any decision of the referee team.

f. The official's organization will be responsible for providing equipment, setting up and monitoring the VAR system.

g. Flagrant Hansoku make decisions will be reviewed by VAR.

Revised (6/2025)

## I. Penalties

1. Technical *hansoku make* involves a violation of technique and includes, but is not limited to, failure to comply with proper uniform (see Section VI. Uniform)
  - a. Contestant shall be allowed to continue to participate in the tournament.
  - b. Bridging while in *osaekomi* (press for score): When the contestant is on top of his/her opponent for *newaza* or *osaekomi* and his/her opponent who is on her/her back over-bridges (neck past vertical-acute angle with body), which places the opponent in a dangerous position, the opponent will be first warned. A second infraction will be a technical *hansoku make*.
2. Ban Drop Knee Seionage (Double Knee)
  - a. The first double knee seionage in a match will be considered a *shido*. The second double knee Seionage in a match will result in a Technical *hansokumake*. (Rev 6/2019)
3. Unsportsmanlike Conduct
  - a. Misconduct involves physical or non-physical acts and can occur before, during or after a match. It includes, but is not limited to such acts as failure to comply with the direction of the officials, swearing, taunting, intimidation, baiting an opponent, throwing items, spitting and clearing of nasal passages in other than the proper receptacle, indicating displeasure with a call, and failure to comply with end of match procedures. Continuing acts of unsportsmanlike conduct shall be construed as flagrant misconduct.
    - 1) Three points shall be deducted from the team score for each unsportsmanlike conduct violation.
    - 2) Contestant shall be allowed to continue to participate in the tournament. However, upon receipt of a second unsportsmanlike conduct penalty, the contestant shall not be allowed to participate for the rest of the day.
  - b. Flagrant misconduct involves physical or non-physical acts and it can occur before, during or after a match and is any act considered by an official to be serious enough to disqualify a contestant from the match and any additional competition. It is not limited to striking, butting, elbowing, kicking, slapping, shoving, biting, use of tobacco products, and extreme and loud displays of displeasure or conduct unbecoming of the sport.

- 1) If a contestant who places in the top six in his/her weight class is disqualified from the tournament due to flagrant misconduct, he/she will lose his/her place finish, award, and all points earned. This lost place finish shall remain unfilled for both place finish and point scoring purposes. Three points shall be deducted from the team score for a flagrant misconduct violation.
  - 2) The team for which a coach is charged with flagrant misconduct shall have five team points deducted from the school's team score and shall be required to immediately leave the competition area for the duration of the event.
  - 3) Coaches are not allowed to step on the mat while coaching or protesting. Any violation may result in a disqualification from the tournament.
- c. Flagrant *hansoku make* occurs during a match and disqualifies a contestant from competition, awards and points and includes, but not limited to, performance of reckless actions, intentionally butting, elbowing, kicking, slapping, shoving, and/or biting which may cause injury or significant intimidation.
- 1) Contestant shall not be allowed to continue to participate in the tournament.
  - 2) Choke holds, arm locks or arm bars are illegal.
  - 3) If a contestant who places in the top six in his/her weight class is disqualified from the tournament due to flagrant *hansoku make*, he/she will lose his/her place finish, award, and all points earned. This lost place finish shall remain unfilled for both place finish and point scoring purposes.
  - 4) The team for which a contestant is charged with flagrant *hansoku make* shall have three team points deducted from the school's team score.
- d. Non-compliance condition: The contestant will be given two minutes to correct a non-compliance condition. Failure to meet the two-minute deadline will result in a *shido* plus a *shido* for every two minutes thereafter.
- e. Any action which may endanger or injure the opponent (including any action where the opponent is thrown directly on the opponent's head or neck) shall result in a flagrant *hansoku make*. (Adopted 06/2018)
- f. For individual tournament competition, a *shido* itself cannot end a match. It must be three *shido* resulting in a technical handokumake. (Rev 6/2019)

#### Protest Procedure

1. There shall be an appeals committee for the HHSAA judo state championships, which will consist of three members – the tournament director, the HHSAA judo coordinator and the head official.

2. Coaches may submit appeals for matters of procedure or misapplication of the rules and not for matters of judgment. If the coach protests a judgment call, he/she will be subject to the rules governing misconduct.
3. The protest procedure shall operate as follows:
  - a. Coach shall approach the scoring table and ask the match to be stopped at the earliest possible moment.
  - b. Coaches will submit their appeal to the referee.
  - c. The referee will consult with the other presiding referees for a decision.
  - d. If the coach is not satisfied with the judgement, he/she should notify the lead referee, who will then consult with the head official and/or the judo coordinator, who will form an appeals committee.
  - e. Coaches may submit appeals at the time of the match and up until both judoka leave ~~the judoka departs from~~ the mat. (rev 6/2025)
  - f. The next match will not begin until the appeal has been decided.
4. The appeals committee shall render a decision to the official and the coach.
5. The decision of the appeals committee shall be final and not subject to any appeal. The appeal shall be documented and kept by the judo coordinator.

#### J. Bench and Bench Conduct

1. Allow two coaches per mat. The coach seated on the outside chair will be the designated coach to instruct athlete and spokesperson. The coach seated on the inside will be able to assist in instruction of athlete while monitoring the score and time. (Rev 6/2017)
2. When space is allowed, have a “Coaches Seating Area” on the arena floor near the chute like wrestling. (*Adopted 06/2018*)
3. The referee has the discretion to warn or eject a coach, contestant, or spectator who is interfering with a match.

#### K. Safety Area

1. When the required safety area on a mat (three meters’ width) cannot be met, a minimum width of two meters may be used.

2. When the two-meter safety area is used, the following edge of the mat rules shall be applied:
  - a. When more than half the body of one contestant is outside the competition area in *newaza* or mat work position.

L. Time Outs

1. Blood Time Out

- a. There shall be a total of four minutes to attend to all blood injuries per contestant during a match. Athletic trainers may attend to the blood injury as many times as allowed in the four minutes. Any clean-up of the mat and/or *gi* shall not be included in the four minutes. Nose plugs are allowed to be used during matches.

2. Injury Time Out

- a. There shall be a total of two minutes per injury for the evaluation of an injured athlete.
- b. A maximum of two visits by an athletic trainer per athlete during a match shall be allowed. On the third visit, the athlete shall forfeit the match.
- c. The final decision as to whether an injured contestant shall continue to compete in his/her match shall be made by the attending athletic trainer.
- d. Visits by an athletic trainer for a suspected head or neck injury shall not penalize the judoka. An appropriate health care professional will have a maximum of 5 min to evaluate an injury to the head, neck or nervous system. (Rev 6/2022)

M. Entries

1. League slots are determined by the HHSAA league representation formula: # of participating schools in the league divided by the # of participating schools in the State, then multiplied by # of slots per weight class.

$$\frac{\text{\# of Participating Teams in League}}{\text{\# of Participating Teams in State}} \times \text{\# of Slots Per Weight Class}$$

2. Each league shall determine the method of selecting their entries subject to the limitations of contestants allocated to their league per weight class.
3. The deadline for entries shall be 8:00 a.m. on the Sunday prior to the tournament.

4. All contestants must compete in the weight division through which they qualified in their league championship.
5. Alternates
  - a. If a contestant who qualified for the state tournament is unable to participate, the contestant's league shall be allowed to enter an alternate contestant as a replacement.
  - b. However, if the contestant's league is unable to fill the open slot with a replacement, the unfilled slot shall be filled by a random drawing of the other leagues' alternate contestants.

## **VI. UNIFORM**

- A. The judo *gi* shall be white or off-white and conform to IJF rules in all other aspects.
- B. If an athlete is assigned to wear a blue belt, that athlete has the option to wear a blue judogi (Rev 6/2022)
- C. Long Hair: A contestant will be allowed an unlimited amount of time to re-tie his/her hair.
- D. Pure white shirt: Female contestants are allowed to have designs on their white and off-white t-shirts or leotards. (6/2017)
- E. The 2016 Gi rule will be acceptable for competition (rev 6/2019)

## **VII. SEEDING COMMITTEE**

- A. The Seeding Committee shall consist of:
  - a. HHSAA executive director
  - b. HHSAA judo coordinator
  - c. A representative from each league
  - d. Any other personnel selected by the HHSAA judo coordinator and approved by the HHSAA executive director
- B. The Seeding Committee shall be responsible for all seeding procedures.
  1. The first-place finisher from each league will be seeded by the committee based on the past finishes in previous HHSAA tournaments at the same weight class. (Rev. 6/2012)

2. The champion and runner-up from the same league shall be placed in opposite brackets.
3. As a secondary criterion, past finishes at previous HHSAA Judo Championships for other weight classes. (Rev. 6/2014)
4. If a league does not have a league #1, seed remaining #1s using rotation. The next highest seed will be the league #2 opposite the highest seeded league #1 in the opposite half bracket. Rotation will not be used to replace the league that does not have a champion. (Rev. 6/2024)
5. HHSAA Rotation and Seeding Criteria for all participants shall be published in the HHSAA coaches packet. (Rev. 6/2024)
6. The HHSAA Seeding Committee shall have the flexibility to adjust the seeding procedures if any discrepancies arise.

#### **VIII. STATE TOURNAMENT DISQUALIFICATION RULE**

Any student-athlete or coach disqualified before, during, or after a state tournament game/match/event for unsportsmanlike conduct, flagrant verbal misconduct, or flagrant physical misconduct shall be disqualified from his/her next scheduled state tournament game/match/event for that sport. The student-athlete or coach has the right to appeal any such disqualification to an appeals committee for the particular sport. Should a student-athlete or coach be disqualified from the final state tournament game/match/event for that sport, said disqualification shall **NOT** carry over to the following school year's state tournament for that sport. Instead, the student-athletes or coach's league shall determine any appropriate penalty or sanction.

#### **IX. AWARDS AND TROPHIES**

- A. Permanent trophy for the championship team.
- B. Permanent trophy for the runner-up team.
- C. 12 medals for the championship team.
- D. Medals for the top six places in each weight classification.

#### **X. TOURNAMENT EVALUATION**

The HHSAA Sport Coordinator and Tournament Director shall submit an evaluation report and tournament results to the HHSAA Executive Director within two weeks after the tournament.

## **XI. ADMISSION**

General Admission                      \$11.00

Tournament participants, coaches, and team managers must be listed on their school's official tournament roster for complimentary admission to the tournament. With respect to participants, only tournament participants will be allowed into the tournament venue for free. Anyone who competed in the regular season but did not qualify for the state tournament will not be allowed into the tournament free of charge.



**PHYSICIAN RELEASE FOR ATHLETE TO PARTICIPATE WITH SKIN LESION(S)**

Student's Name: \_\_\_\_\_

**Release of Medical Information (To be filled out by Parent/Guardian)**

The above named student and parent(s)/guardian(s) hereby consent to the release of medical information by Dr(s) \_\_\_\_\_ to \_\_\_\_\_ high school to obtain information regarding the (Physician's Name) (Name of School) medical history, records of the below injury or surgery, serious illness and rehabilitation results of the student from his/her physician(s). We understand that the purpose of this request for medical information is to assist the school in the management or rehabilitation of the student's injury/illness. This information is confidential and except as provided in this release will not be otherwise released by the parties in charge of the information. This release remains valid until revoked by the adult student or parent/guardian in writing.

Signature of Parent/Guardian or Adult Student: \_\_\_\_\_ Date: \_\_\_\_\_

**(Below to be filled out by physician)**

Diagnosis: \_\_\_\_\_ Date of Exam: \_\_\_\_\_

Location of Lesion(s): \_\_\_\_\_

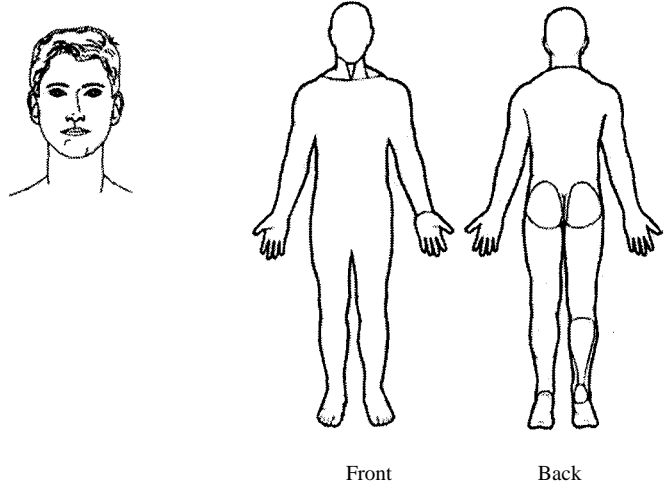
(Mark Location of Lesion(s) on diagram below)

Medication(s) used to treat lesion(s):  
\_\_\_\_\_  
\_\_\_\_\_

Date Treatment Started: \_\_\_\_\_

This Form Expires on: \_\_\_\_\_  
(Date)

Earliest date may return to participation: \_\_\_\_\_



Physician's Name: \_\_\_\_\_  
(M.D. or D.O.)

Office Address: \_\_\_\_\_ Office Phone: \_\_\_\_\_

Physician's Signature: \_\_\_\_\_ Date: \_\_\_\_\_

**Note to Providers:** Non-contagious lesions do not require treatment prior to return to participation (e.g. eczema, psoriasis, etc.). Please familiarize yourself with NFHS Rules 4-2-3 and 4-2-4 which states:

*"ART. 3 ... If a participant is suspected by the referee or coach of having a communicable skin disease or any other condition that makes participation appear inadvisable, the coach shall provide current written documentation from a physician stating that the suspected disease or condition is not communicable and that the athlete's participation would not be harmful to any opponent. This document shall be furnished at the weigh-in or prior to competition in the dual meet or tournament. Covering a communicable condition shall not be considered acceptable and does not make the wrestler eligible to participate. "*

*"ART. 4 ... If an on-site meet physician is present, he/she may overrule the diagnosis of the physician signing the physician's release form for a wrestler to participate with a particular skin condition. "*



Hawaii High School Athletic Association  
 P.O. BOX 62029 • HONOLULU, HAWAII 96839  
 PHONE: (808) 800-4092  
 www.hhsaa.org • info@hhsaa.org

**2026 HHSAA JUDO STATE TOURNAMENT  
 SOUVENIR T-SHIRT PRE-ORDER FORM**

\_\_\_\_\_ School requests to order the following sizes of the  
 souvenir T-shirts at \$20.00 per shirt.

Size	Quantity	Price	Total
Small		\$20.00	
Medium		\$20.00	
Large		\$20.00	
X-Large		\$20.00	
XX-Large		\$20.00	
		<b>GRAND TOTAL</b>	



Email preorders to your respective host (see below) school. Checks payable to HHSAA may be brought to the tournament site of teams first game. **Note: preorders must be paid in full by first day of the tournament or shirts will be released to the general public.**

**Send preorders to:**

Natalie Iwamoto, Athletic Director  
 Moanalua High School  
 E-mail: natalie.iwamoto@k12.hi.us

**Preorders are due:  
 Sunday, May 3, 1pm**

Contact person: \_\_\_\_\_

Daytime phone: \_\_\_\_\_

E-mail: \_\_\_\_\_

## HHSAA Judo State Tournament Records

View HHSAA Judo Tournament Record book at:

Team records:

[https://hhsaa.org/sports/judo/tournament/record\\_book](https://hhsaa.org/sports/judo/tournament/record_book)

Individual Records:

[https://hhsaa.org/sports/judo/tournament/individual\\_champions](https://hhsaa.org/sports/judo/tournament/individual_champions)